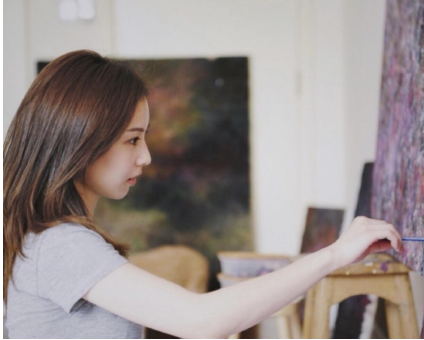


Rosalyn Ng

吳芮愨



Rosalyn Ng (b. 1993 in Hong Kong) graduated from Chelsea College of Art, London, with a major in Fine Art in 2015. Her works translate nascent emotions into organic mark-making expressions. While she is involved in the active creation process, her purpose lies in captivating the viewers through multidimensional layers of bold colors and textures. Despite the seemingly spontaneous placements of colors and forms, her paintings allude to imaginary scenes, which lead to invoking a blend of complicated, mixed feelings of bitterness and sweetness in viewers. This irony between spontaneity and imagination may perhaps be due to her artistic practice of constantly experiencing yearning for the 'ideal' combined with the exploration of freedom. However, her 'ideal' forms in the canvas often contradict herself, resulting in recalibration of her core beliefs, fears, and desires during the creative process. After graduation, Rosalyn has been diligently committed to her artistic practice by developing different styles and obtaining formal education in art criticism. Her works have been exhibited in London, Amsterdam, and Hong Kong from several online to offline exhibitions and publications, including an upcoming feature in Floorr Magazine from London. She recently completed her first solo exhibition 'Lonely Island' in YueJin Art Museum in Taiwan in 2022.

吳芮愨(1993年生於香港)在2015年畢業於倫敦藝術大學切爾西藝術學院藝術系。吳氏在作品中擅長將當下的情感轉化成富生命力的痕跡創作。在創作過程，她利用標誌性的疊加層次和選用大膽的顏色和材質，利用兩者之間的碰撞來吸引觀眾。除了運用顏色形狀和強烈的媒介表達，吳氏的作品展現了想像與現實的平衡。兩者間的諷刺或許是因為她在創作時不斷經歷對理想的嚮往和對自由的探索。然而她在作品中展現的理想形態總是與其自相矛盾，致使她在創作中不斷找尋內心的信念、恐懼和慾望。畢業後，吳氏致力於藝術實踐，發展不同的風格並在藝術評鑑方面繼續鑽研。吳氏的作品曾在倫敦、阿姆斯特丹和香港的展覽和實體出版物中展出，包括即將出版的倫敦Floorr雜誌專題報導。2022年，她在台灣月之美術館的首個個人展覽圓滿結束。

Artist Link: <https://www.solunafineart.com/rosalyn-ng>



Rosalyn Ng 吳芮愨
(b. 1993 in Hong Kong)

Education

- 2015 B.A. Fine Art, Chelsea College of Art and Design (London, UK)
- 2012 Foundation in Art & Design, Central St Martins (London, UK)

Selected Solo Exhibitions

- 2022 YueJin Art Museum (Tainan, Taiwan)

Selected Group Exhibitions

- 2022 Gravity 重力, Soluna Fine Art (Sheung Wan, Hong Kong)
Fine Art Asia, Hong Kong Art Gallery Association x Soluna Fine Art (HKCEC, Wanchai, Hong Kong)
Art Central, Soluna Fine Art (HKCEC, Wanchai, Hong Kong)
Once Upon, Soluna Fine Art (Sheung Wan, Hong Kong)
Amsterdam International Art Fair (Netherlands)
- 2021 REFLECTIONS: work from isolation 2020-2021 (Online)
- 2019 Art Next Expo, PMQ (Central, Hong Kong)
- 2015 Chelsea College of Arts Undergraduate Summer Show, Chelsea College of Art (London, UK)
- 2014 LINKS Exhibition, 5th Base Gallery (London, UK)

