

Jon Poblador

San Gimignano

7 May - 20 June 2026

SOLUNA
FINE ART

Soluna Fine Art is proud to present *San Gimignano*, a solo exhibition by Hong Kong-based Filipino American artist Jon Poblador. Inspired by his visit to the Italian city last year, he was deeply moved by the colors encountered in one of its ancient churches. The exhibition presents a new body of work shaped not by image, but by an experience of atmosphere. Poblador's paintings are not concerned with representation, but rather immerse the viewers in the act of looking.

Working within his signature grid, Poblador constructs each surface through hundreds of repeated marks. Though structured, the grid is not a rigid or prescriptive form, but a condition for attention, enabling focus, discipline, and commitment. Within this framework, color is both composed and discovered, shifting through adjustment and chance. Built up via carefully considered palettes and layered applications of paint, the labor of the work remains largely unseen. Over time, colors contained within individual units begin to dissolve into one another, forming a shared, atmospheric field. As relationships between colors evolve, the surface opens, and what first appears still begins to feel quietly inhabited.

Each brushstroke functions as a kind of silent prayer, meditative, devotional, and sustained by focused attention. *San Gimignano* invites a slower mode of looking. These paintings do not reveal themselves at a glance; they unfold over time. Through sustained attention, something begins to surface, not a fixed meaning, but a shift in awareness. The surface shifts from structure to atmosphere, from stillness to a quiet sense of presence.

Soluna Fine Art 誠意呈獻居港菲裔美籍當代藝術家 Jon Poblador 個展「San Gimignano」。靈感源於藝術家去年到訪的意大利小鎮聖吉米尼亞諾，當時他走進一座古老教堂，留下深刻印象的並非建築本身或宗教象徵，而是一種關於色彩與氛圍的整體感受。Poblador的創作一向不著重圖像再現或單一視覺敘事，而這次經驗進一步啟發他，將繪畫轉化為一場關於觀賞本質的深入探索。

其標誌性的極簡主義格狀繪畫，源於數以百計反覆上色與層層堆疊的過程。儘管方格看似充滿限制或秩序，實際上卻為創作提供一個安靜而穩定的基礎，引導藝術家進入專注、自律與投入的狀態。在這樣的結構之中，色彩既經過安排設計，也在過程中被重新發現，在刻意與偶然之間微妙流動。表面上或許難以察覺，但作品背後的細緻調色與反覆疊加，凝聚了藝術家大量的時間、心力與勞動痕跡。原本各自獨立的色彩逐漸融合，最終匯聚成一個共享氛圍的整體。隨著色彩間的互相牽引，畫面也隨之建立，讓看似靜止的表面流露出內在的生命力。

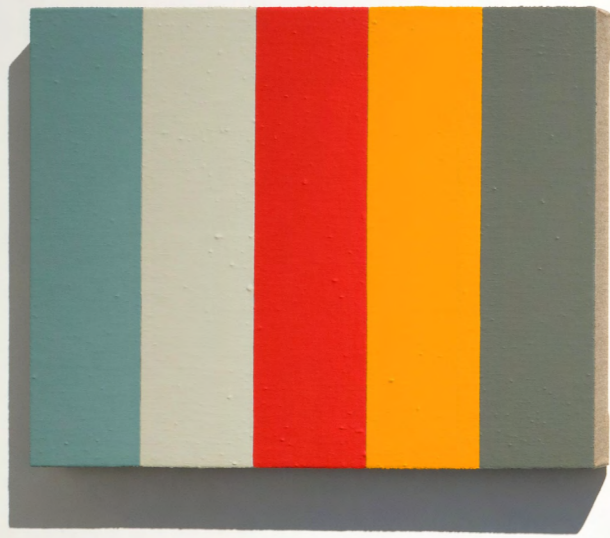
在近乎虔敬的重複動作中，每一道筆觸皆如無聲的祈禱，專注而內斂，帶有冥想的節奏與持續的精神投入和信念。「San Gimignano」邀請觀者放慢觀看的步伐。作品無法在一瞥之間被理解，而需在時間與凝視中逐步展開。當觀看被延長，感知亦隨之轉變。無需刻意尋找既定意義，亦可暫時放下對結構的依賴，隨著畫面進入色彩所構築的氛圍之中，感受其中那份內斂而靜謐的存在感。

About Soluna Fine Art

Soluna Fine Art is a gallery specializing in contemporary fine art and craft. Our mission is to revitalize multicultural aesthetics and philosophy by showcasing exquisite works by established and emerging artists with traditional values in contemporary dialogue. Works by artists represented by Soluna Fine Art can be found in private collections and institutions worldwide. Our annual program includes exhibitions, fairs, educational initiatives, and multi-disciplinary collaborations on an international level.

關於Soluna Fine Art

Soluna Fine Art 是一家精於當代藝術和工藝的畫廊，致力於展示成熟和新興藝術家兼備現代詮釋意義和傳統價值的作品，激發人們對多元文化美學和哲學的興趣。Soluna Fine Art 所代理的藝術家作品均被納入世界各地的私人收藏和機構。我們歷年的項目包括展覽、博覽會、教育計劃和國際的多元合作項目。





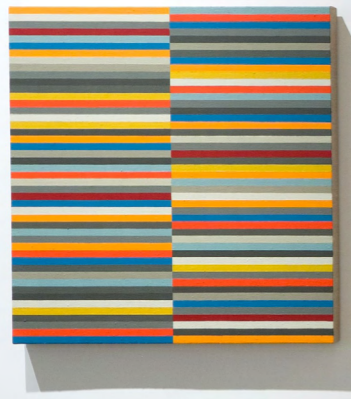
Sequence No. 09

2026
Acrylic on linen over panel
30 x 40 cm



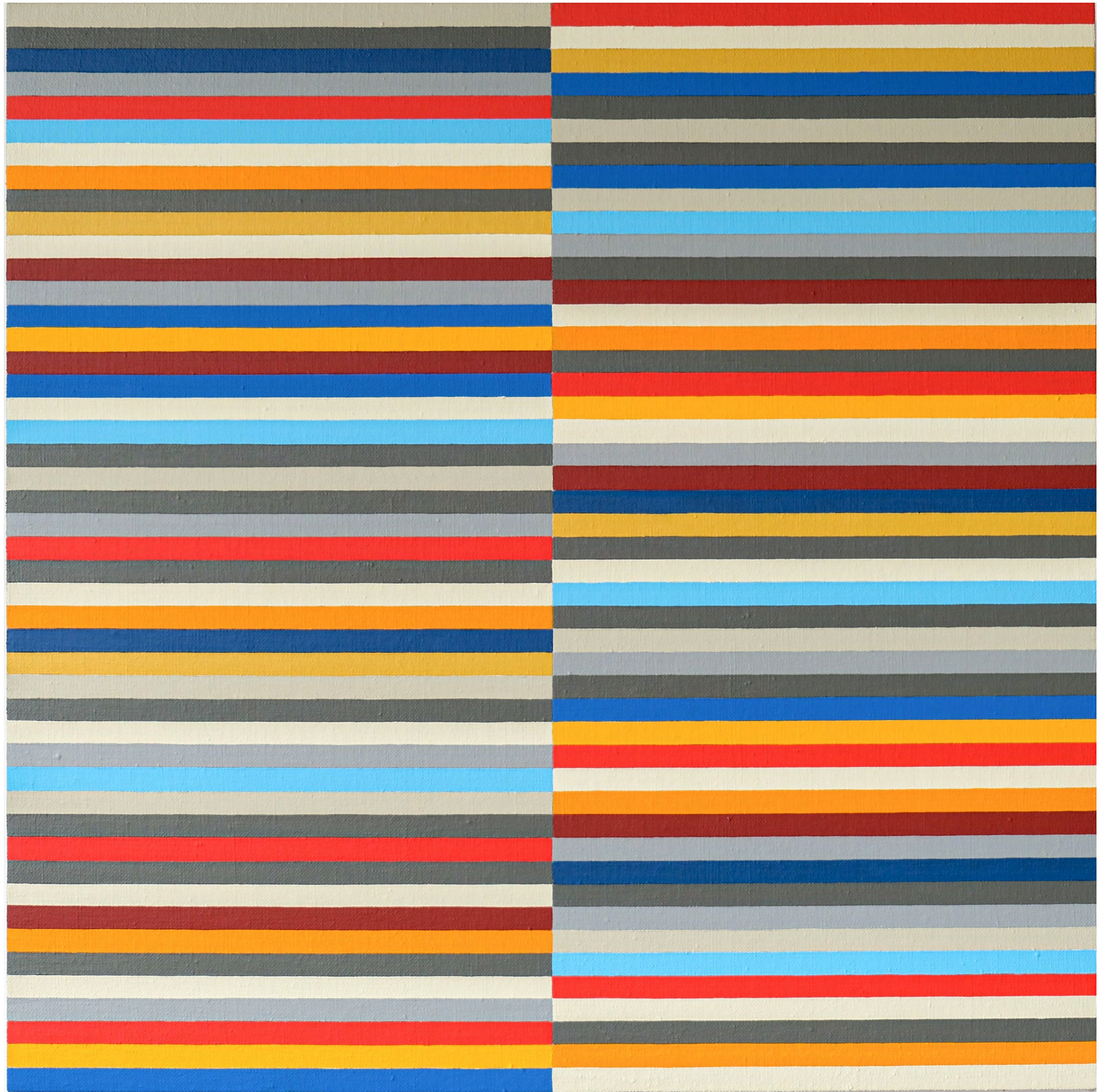
Sequence No. 10

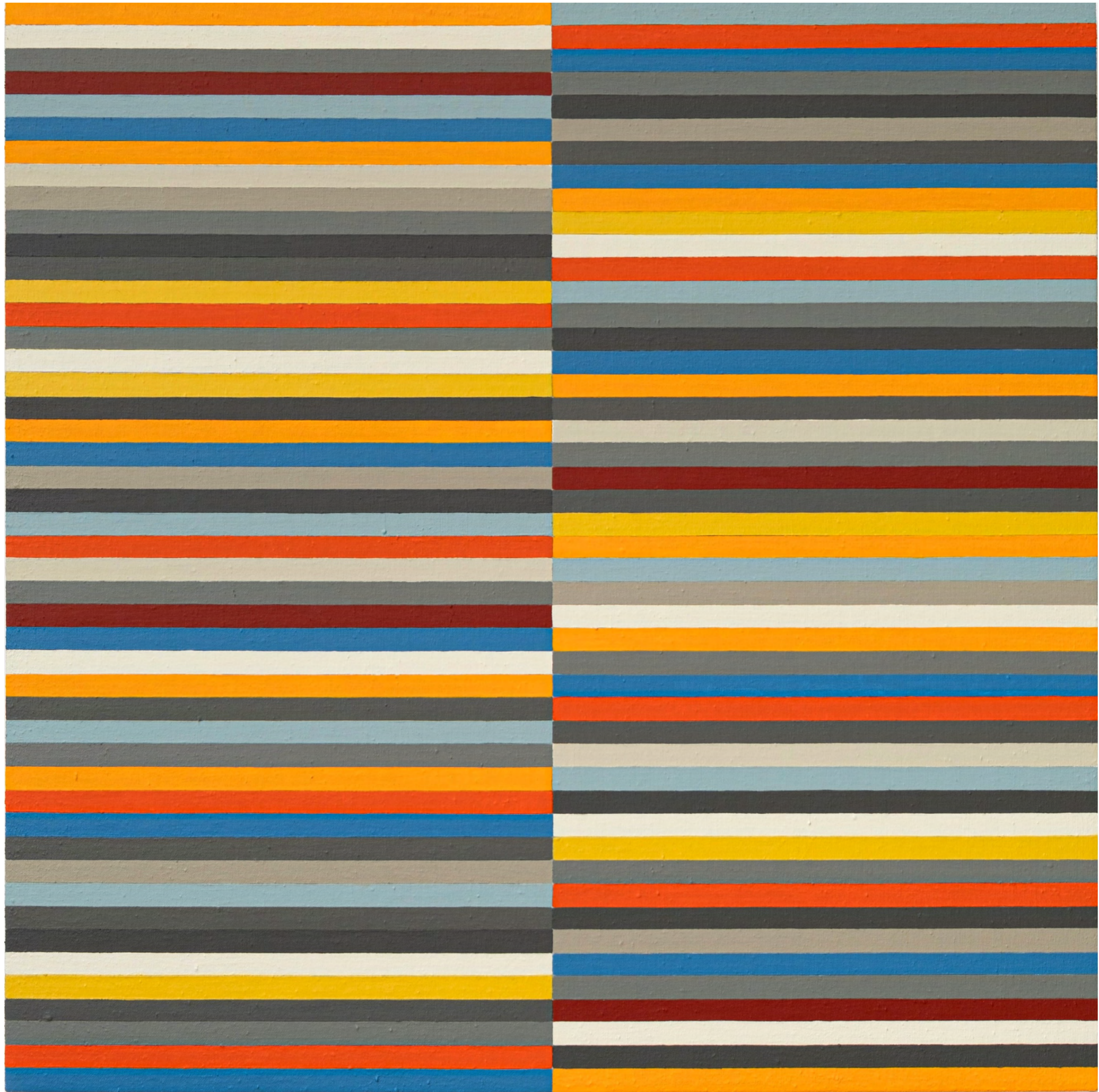
2026
Acrylic on linen over panel
30 x 40 cm



Composition No. 58

2025
Acrylic on linen over panel
60 x 60 cm





Composition No. 59 (Revised)

2025
Acrylic on linen over panel
60 x 60 cm

Composition No. 67

2026
Acrylic on linen cotton over panel
100 x 100 cm





Composition No. 66

2026

Acrylic on linen over panel

50 x 60 cm



Composition No. 57

2025
Acrylic on cotton over panel
150 x 110 cm





Sequence No. 08 (After Hesse)

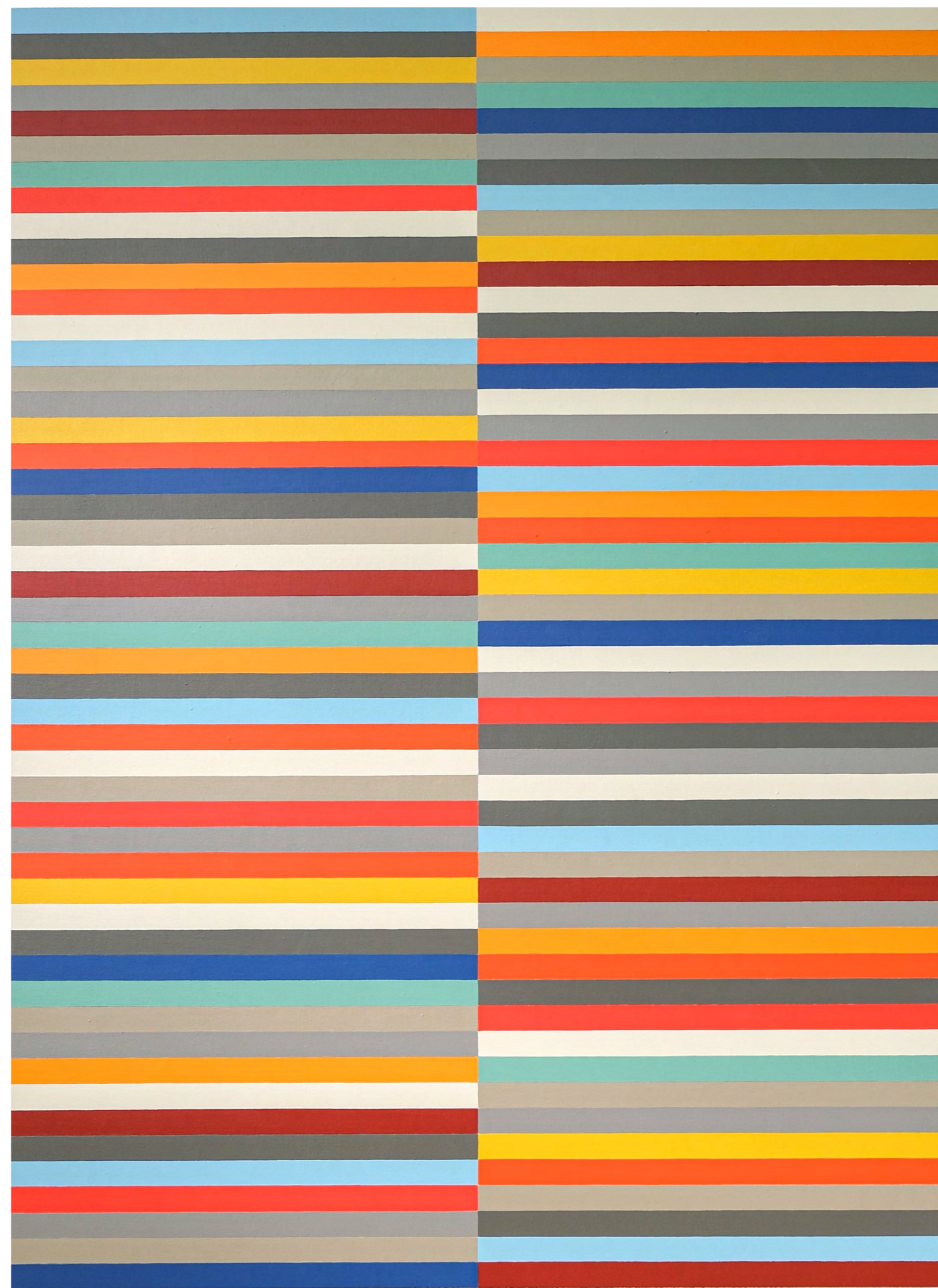
2025
Acrylic on linen over panel
70 x 100 cm

Composition No. 60 (Chapel II)

2025

Acrylic on linen cotton over panel

150 x 110 cm







Sequence No. 01

2025
Acrylic on linen over panel
50 x 60 cm



Sequence No. 12

2026
Acrylic on linen cotton over panel
50 x 60 cm

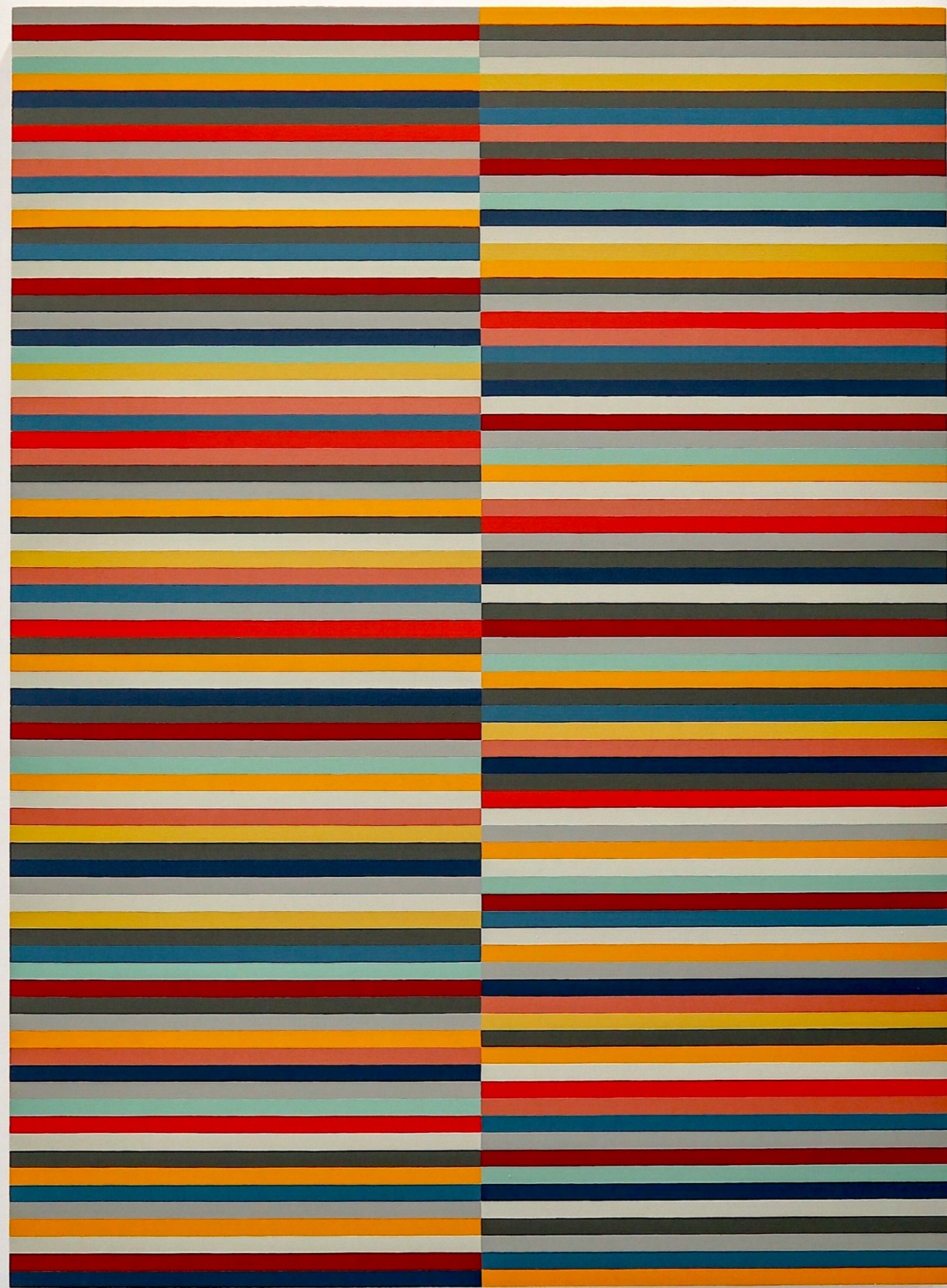
Composition No. 62

2025

Acrylic on linen over panel

90 x 60 cm







Composition No. 64 (Chapel III)

2026

Acrylic on cotton over panel

150 x 110 cm



Jon Poblador

Jon Poblador (b. 1971, Quezon City, Philippines) is a Filipino American contemporary painter. He received a B.F.A. from Northern Illinois University and an M.F.A. from the University of Pennsylvania. Best known for his minimalist works characterized by monochrome palettes, repetition, and meticulous mark-making, Poblador's practice has evolved from densely packed lines and text-based compositions to dots and geometric forms, before settling on the color grids he primarily produces today. Each work is built through an accumulation of devotional acts, with thin layers of acrylic applied section by section. Every brushstroke functions as a kind of silent prayer, deliberate and sustained over time. Through his practice, he explores the accumulation of time and attention while inviting viewers into a different mode of perception, encouraging a slower, more attentive way of seeing. Poblador currently lives and works in Hong Kong and is active in the contemporary art scenes both locally and in the United States. He has held several solo exhibitions across both regions, including at Bridgette Mayer Gallery in Philadelphia and Galerie Koo in Hong Kong.

Jon Poblador 1971年生於菲律賓奎松市，是一名菲律賓裔美國當代畫家，先後取得北伊利諾伊大學藝術學士及賓夕法尼亞大學藝術碩士學位。Poblador以其極簡風格的創作聞名，作品常以單色運用、重複性、精細的痕跡創作為特徵。他的創作由早年密密麻麻的線條與文字構成，逐步演變為圓點與幾何圖形，如今發展為以彩色格狀為主的繪畫語言。每一件作品皆由長時間累積而成，藝術家以分區層層堆疊的方式反覆上色，每一次落筆都像是一段無聲的禱告，內斂但虔誠。透過創作，他探索時間與專注力的累積，同時引導觀者放慢節奏，以更細膩而深入的觀賞方式去體會作品。藝術家現居香港，活躍於本地及美國當代藝術界，曾在費城Bridgette Mayer Gallery、香港雍廷序畫廊等多地舉辦個人展。

Jon Poblador

(b. 1971 in Quezon City, Philippines)

Education

1997 M.F.A. University of Pennsylvania (Pennsylvania, US)

1995 B.F.A. Northern Illinois University (Illinois, US)

Selected Solo Exhibitions

2026 San Gimignano, Soluna Fine Art (Sheung Wan, Hong Kong)

2025 Chapel of Color, Bridgette Mayer Gallery (Philadelphia, US)

2023 Between Shapes and Forms, Galerie Koo (Central, Hong Kong)

2022 Sanctuary, Soluna Fine Art (Sheung Wan, Hong Kong)

2021 Repetition is a Form of Change, Galerie Koo (Central, Hong Kong)

2017 Visible Meditation: An Exhibition in Three Parts, 103 Storey Workshop & Gallery
(Guangzhou, China)

2012 Jon Poblador: "Living Mountain" New and Recent Paintings, Larry Becker Contemporary Art
(Pennsylvania, US)

2007 Jon Poblador: The Two and The One – New Paintings; Larry Becker Contemporary Art
(Pennsylvania, US)

2004 Jon Poblador: New and Recent Paintings, Larry Becker Contemporary Art (Pennsylvania, US)

Selected Group Exhibitions and Art Fairs

2026 KunstRAI, Soluna Fine Art (Amsterdam RAI, Netherlands)
Art Central, Soluna Fine Art (Central Harbourfront, Central, Hong Kong)

2024 Converge, Bridgette Mayer Gallery (Philadelphia, US)
Art Central, Soluna Fine Art (Central Harbourfront, Hong Kong)

2023 Summer Tapestry, Soluna Fine Art (Sheung Wan, Hong Kong)

2022 Array Phase Three: "New Moon in Equinox Tint", Larry Becker Contemporary Art
(Pennsylvania, US)

Reflection, Soluna Fine Art (Sheung Wan, Hong Kong)

Art Central, Soluna Fine Art (HKCEC, Wanchai, Hong Kong)

2021 Sculptural Perspectives, Gilbert Contemporary Art (Arizona, US)
Art Central, Galerie Koo (Wanchai, Hong Kong)

2019 Lines / Squares, Galerie Koo (Central, Hong Kong)

2018 As Under the Evening Light, Larry Becker Contemporary Art (Pennsylvania, US)
g.e.o., Galerie Koo (Central, Hong Kong)

Louder Than Bombs, The Curator Gallery (New York, US)

2016 Louder Than Bombs, Divisible (Ohio, US)

2014 Group Exhibition, Gebert Contemporary Art (Arizona, US)
The... Sea, Larry Becker Contemporary Art (Pennsylvania, US)

2012 'To Be Looked at..., Close to...' [Summer Love]", Larry Becker Contemporary Art
(Pennsylvania, US)

2011 "FACTION", ArtStreet: Studio D, The University of Dayton, Curated by Jeffrey Courtland Jones
(Ohio, US)

2009 Luminous Room, Larry Becker Contemporary Art (Pennsylvania, US)

2007 Some: A Changing Selection of Work by Gallery and Invited Artists, Larry Becker
Contemporary Art (Pennsylvania, US)

2006 Some New: A Survey of Gallery Artists; Larry Becker Contemporary Art (Pennsylvania, US)
Some Light, John Zurier, Merrill Wagner, Steve Riedell Jon Poblador, Joseph Marioni,
Marcia Hafif, Barry Goldberg, Joe Begonia and
Others, Larry Becker Contemporary Art (Pennsylvania, US)

2005 View (Some New): A Changing Survey of New Work By Gallery
Artists, Larry Becker Contemporary Art (Pennsylvania, US)

2003 View: A Changing Survey of New Work By Gallery Artists, Larry
Becker Contemporary Art, (Pennsylvania, US)
Some Painting: Anne Appleby, Stuart Arends, Marcia Hafif, Joseph Marioni, Jon Poblador,
John Zurier, Larry Becker Contemporary Art (Pennsylvania, US)

2002 New Selections: A Changing Survey of New Work By Gallery Artists, Larry Becker
Contemporary Art (Pennsylvania, US)

2001 Duo Exhibition, Jim Lee / Jon Poblador: New Paintings; Larry Becker Contemporary
Art (Pennsylvania, US)
Propositions: New Work from Dublin and Philadelphia, Locks Gallery, Curated by Patrick
Murphy, Director, Institute of Contemporary Art (Pennsylvania, US)

2000 View (Red, White and...), Larry Becker Contemporary Art (Pennsylvania, US)

1999 New Selections: A Changing Survey of New Work By Gallery Artists, Larry Becker
Contemporary Art (Pennsylvania, US)

Residencies

2018 La Porte Peinte Centre pour les Arts, Noyers (France, July)

2016 Red Gate Gallery Residency (Beijing, China)

Publications

"Painters of Grand Tetons National Park," by Donna Poulton and James
Poulton, Gibbs-Smith, October 2015

Jon Poblador: San Giminano
7 May - 20 June 2026
Published by Soluna Fine Art

All works of art © 2026
Jon Poblador
Catalogue © 2026 Soluna Fine Art

Curation by Rachel Lee, Mirinai Choi
Project Coordination by Bess Yung
Design & Exhibition Operation by Angie Dai

All rights reserved.
No part of this publication may be reproduced or transmitted in
any form or by any means, electronic or mechanical without
written permission of the publisher.

