


KIM DUCK-YONG
Auspicious Dream

11 May - 30 June 2023

SOLUNA
FINE ART



Published by Soluna Fine Art
to accompany the exhibition
Auspicious Dream
11 May - 30 June 2023

All works of art © 2023
Kim Duck-Yong
Catalogue © 2023 Soluna Fine Art

Curation by Rachel Eunju Lee
Public Relations by Bess Yung
Content & Design by Hannah Lee
Translation by Karen Wong

All rights reserved.
No part of this publication may be reproduced or
transmitted in any form or by any means,
electronic or mechanical without
written permission of the publisher.

Soluna Fine Art is delighted to present Kim Duck-Yong's second solo exhibition 'Auspicious Dream' across its two gallery floors in Hong Kong. Alongside Kim's iconic mother-of-pearl series of 'Ocean Rhapsody' (oceanic sceneries), 'Borrowed Scenery' (partial ocean views in window frames), and 'Scholar's Accoutrement' (books and objects on shelves), the exhibition will debut nine new works and series titled 'Auspicious Dream' (2023), depicting pearlescent night landscapes. Kim's continuous philosophical exploration of materials, which echo the traditional Eastern Asian heritage, enables the viewers to have new experiences of art and nature within the modern context. 'Auspicious Dream' will be on view from 11 May to 30 June 2023, with an opening on 11 May (Thursday), 6 - 8pm.

The word 'auspicious' describes signs of luck in unforeseen situations. It also reflects humanity's hopes and prayers to the universe across all religions. When 'auspicious dream' is translated into Korean and Chinese (상서로운 꿈; 夜夢吉祥), the etymology is more concerned with humanity's primordial awareness and conviction that there are magical forces in the universe bringing blessings and fortunes. Moreover, for over thirty years, Kim has been building his modus operandi by painting primarily on aged wood and eventually integrating mother-of-pearl. Despite the heavy limitations of natural materials compared to painting on canvas or paper, he had always preferred raw, authentic portrayals of nature. Kim's undaunted workmanship may also be considered his humanistic endeavor, a form of prayer, to maintain a close relationship with mother nature.

At the core of Kim Duck-Yong's solo exhibition, 'Auspicious Dream', are representations of the cosmos, ocean, and human home, symbolizing the infinite connectivity between humanity and nature. It also contains the tri-conceptual idea of Heaven-Earth-Man in the Confucius scriptures of 「Yi Jing」 and 「Zhong Yong」 emphasizing that Man came into this world through Heaven and Earth to live in harmony with mother nature. Kim has continuously sought new ways to represent nature and the timelessness of the materials by exploring the theme of Heaven-Earth and time-space, which evoke a sense of wonder about the universe.

In the new series, the artist meticulously renders the nocturnal landscapes infused with sublime qualities: the vast universe, cosmic spirals, and lights. According to Erman Kaplama, philosopher of aesthetics, in 'The Cosmological Aesthetic Worldview in Van Gogh's Late Landscape Paintings', sublime art moves human imagination differently than the experience of beauty. Whereas the 'beautiful' connotes a static objective quality, the 'sublime' connotes a fluid elemental force beyond human comprehension, like the forces of nature, functioning to extend viewers' imagination.

The spiral of light is one of the main recurring themes in Kim's work titled 'A Profound Space'. In Dionysian, a philosophical concept that embraces the human nature of

chaos and irrationality, the spiral symbolizes the continuous cycle of creation and destruction, the process of 'becoming', and the necessary excitation for the continuation of motion and life. Moreover, the spiral's centric cosmic heat emits light onto the mountains below, fueling the activities of the cosmos and humanity. The metaphysical interpretations of cosmological aesthetics in Kim's landscape paintings reveal the fundamental truth about the essence of beauty that transcends life and death.

About Kim Duck-Yong

Kim Duck-Yong (b. 1961) was born in Korea and received his B.F.A. and M.F.A. from the Department of Painting at Seoul National University in Korea. By integrating both traditional and contemporary practices in his work of art, he, on one hand, follows the tradition of oriental paintings by using ancient wood as his canvas, which allows the viewer to sense the warmth of nature through minor details. On the other hand, by highlighting the importance of traditional materials and painting key iconographies that echo with his heritage, Kim primarily explores the contemporary mechanics of Korean society. In other words, Kim's paintings reveal the change of time with its attribute of intergenerational transience that overarches old and new histories. With works placed in important institutional collections in South Korea such as the National Museum of Modern and Contemporary Art, Seoul Museum of Art, Park Soo-Keun Museum, and Gyeonggi Museum of Art, Kim has been recognized as one of the established artists among the Korean art scene.

Soluna Fine Art 很高興宣布 金德龍的第二個個展《夜夢吉祥》將在畫廊展出。除了最標誌性的木本珍珠貝母系列 Ocean Rhapsody (海洋風景)、Borrowed Scenery (窗框中的部分海景) 和 Scholar's Accoutrement (書架上的書籍和物品) 外,展覽將推出九幅新作品和《夜夢吉祥》系列 (2023), 筆下描繪珠光般的夜景。金德龍對材料哲學持續探索, 呼應了傳統東亞遺產, 讓觀者在現代語境中感受形上學思想、藝術與自然的交匯。《夜夢吉祥》展期為2023年5月11日至6月30日展出, 開幕儀式於5月11日 (星期四) 晚上6時至8時舉行。

「吉祥」二字, 描述了在不可預見的情況下出現的幸運跡象, 皆為成功之兆, 反映人類信奉宗教是向宇宙祈禱, 希望獲得上天的祝福而達自成功。當夜夢吉祥被翻譯成韓文 (상서로운 꿈) 和中文時, 其詞源更顯出人類確信宇宙或更高的力量有能力為他們帶來祝福和財富。為此, 金德龍三十多年來一直在建立自己的作畫手法, 由開始以陳舊的木頭作媒介, 到十年前把珍珠貝母加入畫中。儘管天然材料比畫布或紙張擁有更大的局限性, 但他始終更崇尚原始、真實的自然寫照。他鍥而不捨、致力研究把自然元素融入作品的作畫工藝被視作一種為與自然保持緊密關係而作出的禱告。

金德龍個展《夜夢吉祥》的核心是宇宙、海洋和居所, 象徵人類與自然之間的無限連結。當中包含儒家經典《易經》、《中庸》中的天地人三觀, 強調人借天地降世, 與自然和諧相處。金氏通過探索天地和時空的主題, 鍥而不捨地尋求新的方式來表現材料的本質及永恆, 讚歎宇宙的鬼斧神工。

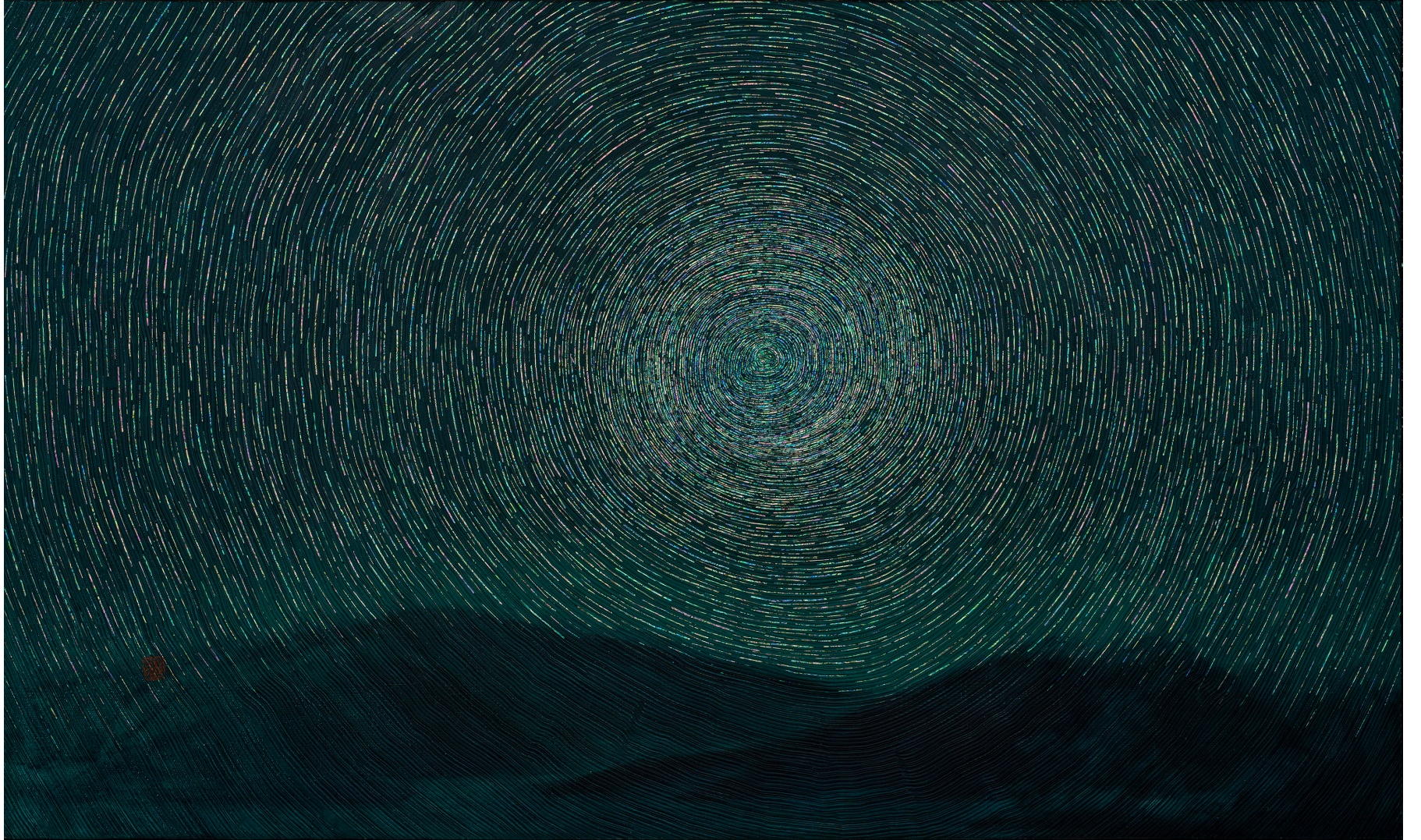
在新系列中, 金氏描繪的夜景由浩瀚的宇宙、旋轉的宇宙和燈光所構成, 得到另一層次的昇華。美學哲學家Erman Kaplama在The Cosmological Aesthetic Worldview in Van Gogh's Late Landscape Paintings中指出, 比起界定美的定義, 崇高的藝術用以刺激人類想像。「美麗」意味著靜態的客觀品質, 而「崇高」則意味著超越人類理解的流動的元素力量, 就像大自然利用它的力量擴展觀眾想像力。

螺旋轉動的光是“A Profound Space”中重複出現的主題之一。在酒神精神的哲學概念中, 人性是非理性且混沌。螺旋象徵著不斷創造和破壞的循環, 是「生成」的過程, 以及激發行為和生命延續的必需條件。此外, 螺旋中心的宇宙熱量將光發射到下方的山脈, 為宇宙和人類的活動提供燃料。金德龍的山水畫中表達的宇宙美學的形上學, 進一步揭示跨越生死為美之本質。

關於金德龍

金德龍於1961年在韓國出生, 從韓國首爾國立大學繪畫系取得學士及碩士學位。金氏將傳統和現代手法融入他的藝術作品中。他源用東方繪畫的傳統, 利用古木作為畫布, 讓觀者在作品中感受大自然的溫暖。金氏更以傳統物料和與文化歷史背景相聯的意象繪畫, 探究當代韓國社會的力學。金氏的作品中跨越 新舊歷史的代際, 頃刻揭示了時間變遷。金氏的作品亦被南韓不同重要博物館納入收藏, 包括韓國國立現代美術館、首爾藝術博物館, 朴壽根博物館和京畿道美術館, 尤其凸顯他在韓國藝術界的非凡地位。





A Profound Space

2023

Mother of pearl, mixed media on wood

120 x 200 cm



A Profound Space

2018

Mother of pearl, mixed media on wood

122 x 180 cm



A Profound Space

2021

Mother of pearl, mixed media on wood

100 x 95 cm



Light_Auspicious Landscape

2023

Wood ash, mother of pearl, mixed media on canvas

73 x 61 cm

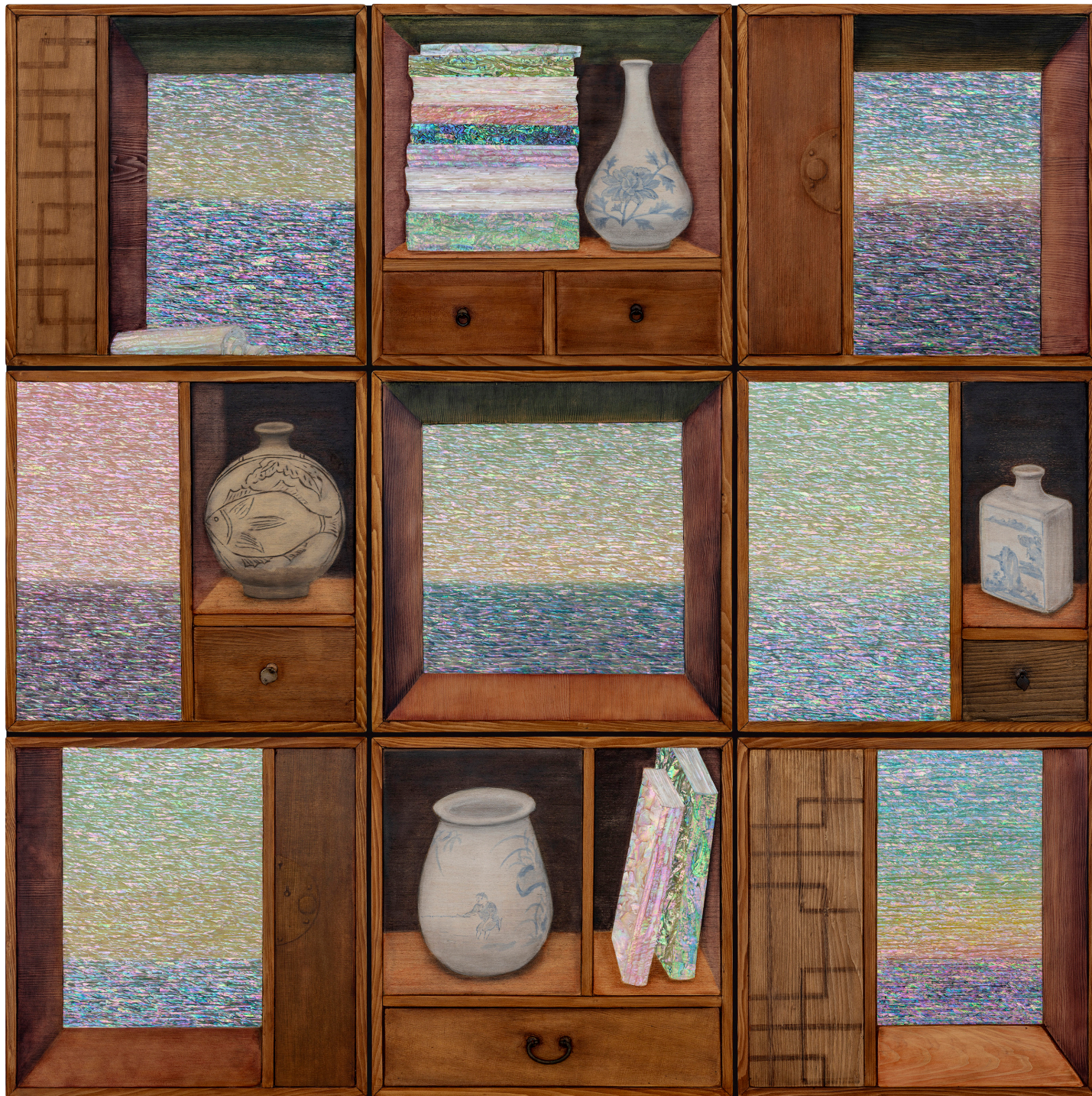


Light_Auspicious Landscape

2023

Wood ash, mother of pearl, mixed media on canvas

160 x 140 cm

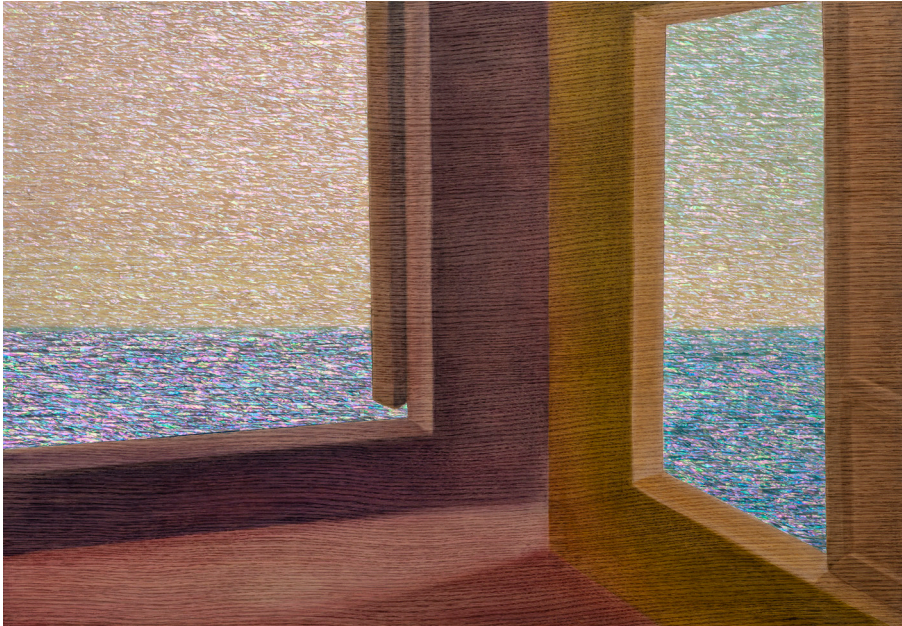


Auspicious Space

2023

Mother of pearl, mixed media on wood

50 x 50 cm (9 piece each)



Borrowed Scenery_Time & Space

2023

Mother of pearl, mixed media on wood

85 x 120 cm

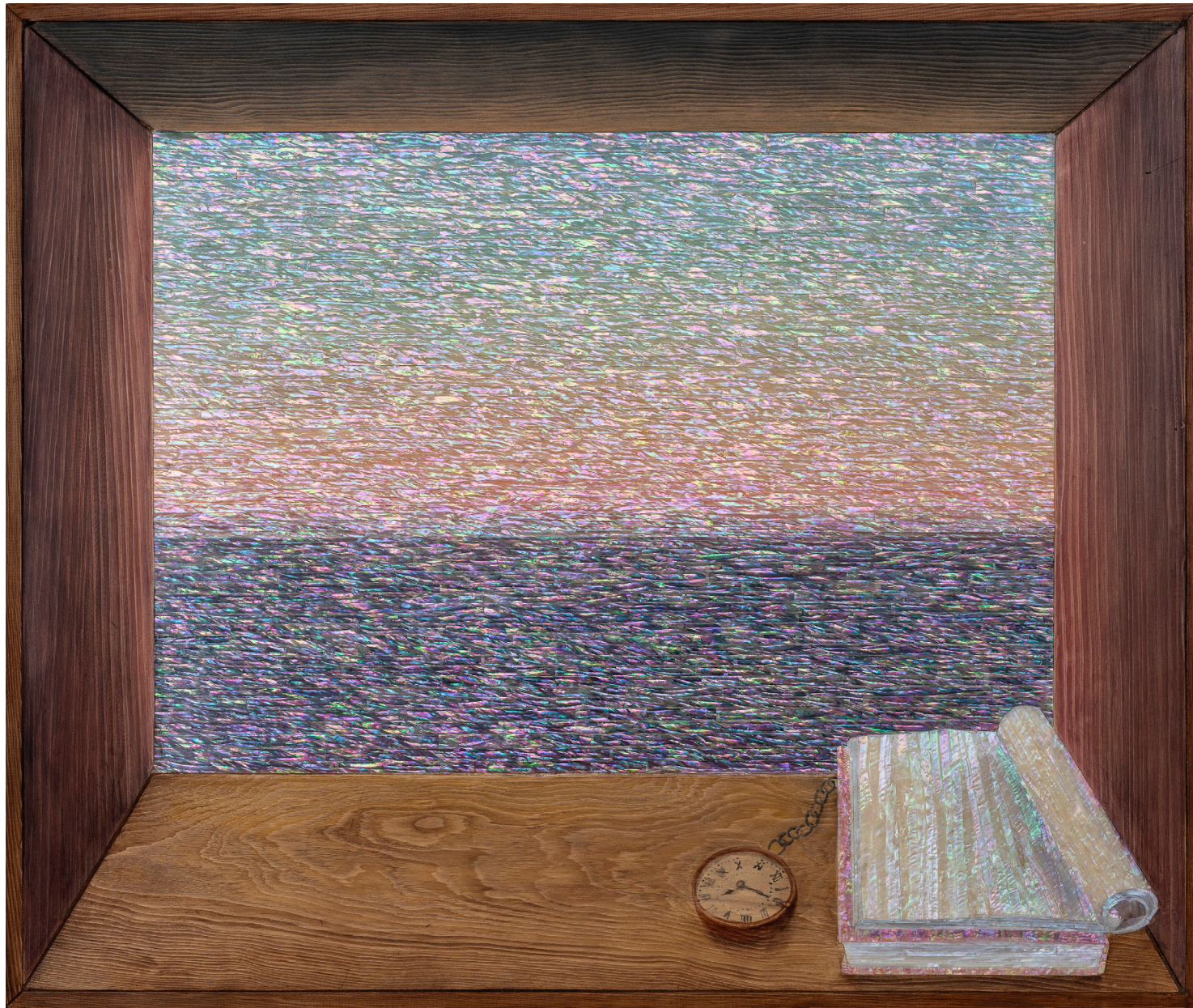


Borrowed Scenery_Time & Space

2023

Mother of pearl, mixed media on wood

100 x 140 cm



Borrowed Scenery

2022

Mother of pearl, mixed media on wood

84 x 100 cm



Chaekgeori-Homing

2021
 Mother of pearl, mixed media on wood
 70 x 99 cm



Scholar's Accoutrement

2022
 Mother of pearl, mixed media on wood
 78 x 112 cm



Scholar's Accoutrement

2021

Mother of pearl, mixed media on wood

76 x 98.5 cm



Borrowed Scenery

2020

Mother of pearl, mixed media on wood

100 x 85 cm

Kim Duck-Yong 金德龍
(b. 1961, South Korea)

Education

B.F.A. Painting, Seoul National University (Seoul, Korea)

M.F.A. Painting, Graduate school of Seoul National University (Seoul, Korea)

Selected Solo Exhibitions

- 2023 Auspicious Dream, Soluna Fine Art (Sheung Wan, Hong Kong)
Auspicious Dream, Leehwaik Gallery (Seoul, Korea)
- 2022 借景 과 自景 사이, Youngeun Museum (Kyungki-Do, Korea)
- 2021 Homing, Nama Gallery (Seoul, Korea)
- 2020 Ocean Rhapsody, Soluna Fine Art (Sheung Wan, Hong Kong)
The Light and Grain, Soul Art Space (Busan, Korea)
Artist of AMI, Ami Art Museum (Dang-jin, Korea)
- 2018 Between, Soul Art Space (Busan, Korea)
- 2017 Leehwaik Gallery (Seoul, Korea)
- 2016 Susan Eley Fine Art (New York, USA)
- 2015 Soul Art Space (Busan, Korea)
- 2013 Kenji Taki Gallery (Nagoya, Japan)
- 2012 Gallery Hyundai, Dugahun (Seoul, Korea)
- 2011 Gallery Hyundai (Seoul, Korea)
- 2009 Gallery Hyundai (Seoul, Korea)
Kenji Taki Gallery (Tokyo, Japan)
- 2008 Kim Duck Yong, Zadok Bern-David (I-Myu Project, London, UK)
- 2006 Leehwaik Gallery (Seoul, Korea)
- 2004 Leehwaik Gallery (Seoul, Korea)
Hakgojae Art Center (Seoul, Korea)
- 2003 Galerie Hellhof (Kronberg, Germany)
- 2002 Leehwaik Gallery (Seoul, Korea)
- 2001 Gong Gallery (Seoul, Korea)

Selected Group Exhibitions

- 2023 백자 : 어떻게 흙에다가 채운을 넣었을까, Seoul Museum of Craft, (Seoul, Korea)
- 2022 Ode to the Moon, Soluna Art Group & Korean Cultural Center (Central, Hong Kong)
- 2021 20th Anniversary Part 1, Leehwaik Gallery (Seoul, Korea)
PRISM, Soluna Fine Art (Sheung Wan, Hong Kong)
Full Moon, Soluna Fine Art (Sheung Wan, Hong Kong)
- 2020 Soaring, Leehwaik Gallery (Seoul, Korea)
- 2019 Sungnam's Face: Home (Sungnam Cube Museum of Art, Sungnam, Korea)
The Allurements of Still-Life, Muan Seungwoo Oh Museum of Art (Muan, Korea)

- 2018 Borrowed Landscape, Woljeon Museum of Art Icheon (Icheon, Korea)
Autobiographical Love: Beautiful, Gallery Marie (Seoul, Korea)
My Story, Gallery Joeun (Seoul, Korea)
- 2017 Korea-UAE Art Exhibition: Woman and Nature, National Theatre (Abu Dhabi, UAE)
The Secret Garden of Prince Anpyoeng, Zaha Museum (Seoul, Korea)
Allme invitation Exhibition, Allme Art Space (Seoul, Korea)
The Sea 海, Gallery Joeun (Seoul, Korea)
- 2016 Gallery Joeun (Seoul, Korea)
- 2015 Antique Furniture and Contemporary Art, Leehwaik Gallery (Seoul, Korea)
Innumerable Changes: Ceramics In A Picture, Woljeon Museum of Art Icheon (Icheon, Korea)
Beauty: Beautiful People, Seoul Museum (Seoul, Korea)
- 2014 Exhibition of Celebrating for Opening Gallery, D Gallery (Gwangju, Korea)
- 2013 Figure, Panorama, Jeonbuk Museum of Art (Jeonbuk, Korea)
- 2012 Exhibition of A True-view Landscape Paintings, Interalia Art Company (Seoul, Korea)
- 2011 LEEHWAIK GALLERY 10th Anniversary, Leehwaik Gallery (Seoul, Korea)
- 2010 Soul of Line, Ungno Lee Museum (Daejeon, Korea)
In the Midst of the Korean Contemporary Art, Gallery Hyundai (Seoul, Korea)
- 2009 Exhibition of Traditional and Contemporary Paintings, Kyungwoon Museum of Art (Seoul, Korea)
Artists and Moon Jars, Gallery Hyundai Gangnam Space (Seoul, Korea)
The Still: Logical Conversation, Gallery Hyundai (Seoul, Korea)
Small is Beautiful, Leehwaik Gallery (Seoul, Korea)
- 2008 Contemporary Artists Preview, Art seasons Gallery, (Singapore, Beijing, China)
Opening Ceremony for AG Gallery, AG Gallery (Seoul, Korea)
- 2007 Asian Week, Gallery 27 (London, UK)
The central Exhibition of Korean Contemporary Art, Korean Arts Center (Korea)
Exhibition of faces of Sungnam, Sungnam Arts Center (Sungnam, Korea)
Exhibition of Today's Four Artists, Sun Gallery (Seoul, Korea)
- 2006 Paint the literature, Bukchon Art Museum (Seoul, Korea)
- 2005 Invitational Exhibition of Jebiwool, Jebiwool Art Museum (Gwachon, Korea)
Exhibition of Korea Poems Contained on the Fans, Seoul Museum of Art (Seoul, Korea)
- 2004 Painting on Wood, Gallery Cho (Seoul, Korea)
Exhibition for artist awarded at Dong-A fine art festival, Sang Gallery (Seoul, Korea)
- 2003 The Exhibition for Life and Humor in Days, Sejong Center (Seoul, Korea)
Oriental Painting Paradiso, Posco Art Museum (Seoul, Korea)
Prince and Princess, Gallery Hyundai (Seoul, Korea)
Celebrating Exhibition for Opening Park Soo Keun Museum, Park Soo Keun Museum (Yanggu, Korea)
- 2002 Seishin Exhibition, aichi gallery (Nagoya, Japan)
The 2nd Exchange Exhibition of Korea & Japan Art, Gong gallery (Seoul, Korea)
International Contemporary Art, Sejong Center (Seoul, Korea)

- Grand et Jeunes d'Arjourd'hui, Espace Auteuil (Paris, France)
 Fellow Artists awarded at Dong-A fine art festival Exhibition, The National Museum of Contemporary Art (Gwacheon, Korea)
- 2001 Invitational Exhibition, Celebrating for Opening Gallery, Jebiri Gallery (Gwacheon, Korea)
 The 1st Exchange Exhibition of Korea & Japan Art, Gong Gallery (Seoul, Korea)
 Exhibition of 24 years Ceremony for the Sun Gallery, Sun Gallery (Seoul, Korea)
- 2000 Korea painting New Millennium Exhibition, Seoul Museum of Art (Seoul, Korea)
 Seoul National University in the New Millennium, Seoul Museum of Art (Seoul, Korea)
 Dong-A Grand Art Invited Exhibition, Ilmin Museum of Art (Seoul, Korea)

Selected Fairs

- 2023 Korea Galleries Art Fair, Leewaik Gallery (COEX, Seoul, Korea)
 Art Central, Soluna Fine Art (HKCEC, Wanchai, Hong Kong)
- 2022 Fine Art Asia, Soluna Fine Art (HKCEC, Wanchai, Hong Kong)
 Homing, Art Central, Soluna Fine Art (HKCEC, Wanchai, Hong Kong)
 KIAF, Seoul Art Space (COEX, Seoul, Korea)
 KIAF, Leehwaik Gallery (COEX, Seoul, Korea)
 Art Busan, Leehwaik Gallery (Busan, Korea)
 Art Paris, M9 (Paris, France)
- 2021 Abu Dhabi Art Fair, Leehwaik Gallery (Abu Dhabi, United Arab Emirates)
 KIAF, Leehwaik Gallery (COEX, Seoul, Korea)
 Fine Art Asia, Soluna Fine Art (HKCEC Wanchai, Hong Kong)
 Art Central, Soluna Fine Art (HKCEC Wanchai, Hong Kong)
 Art Busan Leehwaik Gallery (Busan, Korea)
- 2020 Fine Art Asia, Soluna Fine Art (HKCEC Wanchai, Hong Kong)
 Abu Dhabi Art, Leehwaik Gallery (Abu Dhabi, United Arab Emirates)

Collections

- National Museum of Modern & Contemporary Art Korea (Gwacheon, Korea)
 Seoul Museum of Art (Seoul, Korea)
 Park Soo Keun Museum (Gangwon-do, Korea)
 Gyeonggi Province Art Museum (Gyeonggi-do, Korea)
 Korea University (Seoul, Korea)
 Ministry of Foreign Affairs and Trade (Seoul, Korea)
 Korean Embassy in Switzerland (Bern, Switzerland)
 Grand Intercontinental Hotel (Seoul, Korea)
 Daeyang Shipping Co.,Ltd. (Seoul, Korea)
 Jeju Phoenix Island (Jeju, Korea)
 Abu Dhabi Tourism & Culture Authority (ADTCA, UAE)
 Emirates Center for Strategic Studies and Research (ECSSR, UAE)

About Soluna Fine Art

Soluna Fine Art is a gallery specialising in Asian fine art and objects with deep roots in South Korea. Our mission is to revitalise interest in Eastern aesthetics and philosophy by showcasing established and emerging artists and works of traditional value with contemporary interpretation. Works by artists represented by Soluna Fine Art can be found in private collections and institutions around the world. As well as exhibitions, our annual programme includes fairs, educational initiatives and multi-disciplinary collaborations on an international level.

Gallery opening hours: Tuesday - Saturday, 10am - 6pm

For press inquiries, please contact:

Bess Yung at bess@solunafineart.com or +852 9554 5272

Follow Soluna Fine Art:

Instagram ([@solunafineart](https://www.instagram.com/solunafineart)),
 Facebook ([facebook.com/SolunaFineArt](https://www.facebook.com/SolunaFineArt)),
 Artsy ([artsy.net/soluna-fine-art](https://www.artsy.net/soluna-fine-art))
 #SolunaFineArt

關於Soluna Fine Art

Soluna Fine Art是一家來自韓國並精於當代亞洲藝術的畫廊，致力於展示成熟和新興藝術家的兼備現代詮釋意義和傳統價值的作品，激發人們對東方美學和哲學的興趣。Soluna Fine Art所代理的藝術家的作品均被納入世界各地的私人收藏和機構。除畫廊內部的展覽之外，我們歷年也作為被邀請方參與國際的博覽會、教育計劃和多元的合作項目。

營業時間：星期二至星期六，早上十時至晚上六時

任何媒體查詢，請聯絡：

contact@solunafineart.com 或 +852 2955 5166

關注 Soluna Fine Art:

Instagram ([@solunafineart](https://www.instagram.com/solunafineart)),
 Facebook ([facebook.com/SolunaFineArt](https://www.facebook.com/SolunaFineArt)),
 Artsy ([artsy.net/soluna-fine-art](https://www.artsy.net/soluna-fine-art))
 #SolunaFineArt

