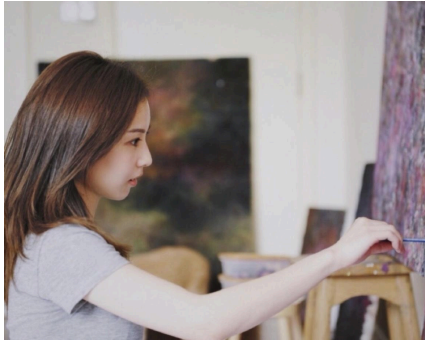


Rosalyn Ng

吳芮慇



Rosalyn Ng (b. 1993, Hong Kong) graduated from Chelsea College of Arts, University of the Arts London, majoring in Fine Art in 2015. Her works translate nascent emotions into organic mark-making expressions. While she is involved in the active creation process, her purpose lies in captivating viewers through multidimensional layers of bold colors and textures. Despite the seemingly spontaneous placement of colors and forms, her paintings allude to imaginary scenes, invoking a blend of complicated, mixed feelings of bitterness and sweetness in viewers. This irony between spontaneity and imagination may be due to her artistic practice of constantly experiencing yearning for the 'ideal' combined with the exploration of freedom. However, her 'ideal' forms on canvas often contradict herself, resulting in the recalibration of her core beliefs, fears, and desires during the creative process. After graduation, Rosalyn has been diligently committed to her artistic practice by developing different styles and obtaining formal education in art criticism. Her works have been exhibited in London, Amsterdam, and Hong Kong from several online to offline exhibitions and publications, including a feature in Floorr Magazine from London.

吳芮慇（1993年生於香港）在2015年畢業於倫敦藝術大學切爾西藝術學院藝術系。吳氏在作品中擅長把初生感受轉化到有機的痕跡創作拼貼。在創作過程中，她選用大膽的顏色和材質於畫布上疊加層次，利用兩者之間的碰撞來吸引觀眾。由於她在藝術創作時被自由探索及精雕細琢兩個截然相反的方向拉扯，以致作畫時於隨意與精心鋪排間搖擺不定。因此作品的色彩及形態看似隨意鋪排，又令景象隱約浮現，帶給觀眾一股既苦澀又甜蜜的複雜感受。畢業後，吳氏於創作路上探索不同的風格，並在藝術評鑑方面繼續深造。其作品曾在倫敦、阿姆斯特丹和香港的展覽和實體出版物中展出，包括倫敦Floorr雜誌專題報導。

Artist Page:

<https://www.solunafineart.com/rosalyn-ng>



Rosalyn Ng 吳芮慇
(b. 1993, Hong Kong)

Education

- 2015 BA Fine Art, Chelsea College of Arts (London, UK)
- 2012 Foundation in Art & Design, Central Saint Martins (London, UK)

Selected Solo Exhibitions

- 2022 Lonely Island, YueJin Art Museum (Tainan, Taiwan)

Selected Group Exhibitions & Art Fairs

- 2024 Art Central, Soluna Fine Art (Central Harbourfront, Central, Hong Kong)
- 2023 Summer Tapestry, Soluna Fine Art (Sheung Wan, Hong Kong)
Art Central, Soluna Fine Art (HKCEC, Wanchai, Hong Kong)
- 2022 Gravity 重力, Soluna Fine Art (Sheung Wan, Hong Kong)
Fine Art Asia, Hong Kong Art Gallery Association x Soluna Fine Art
(HKCEC, Wanchai, Hong Kong)
Art Central, Soluna Fine Art (HKCEC, Wanchai, Hong Kong)
Once Upon, Soluna Fine Art (Sheung Wan, Hong Kong)
Amsterdam International Art Fair (Netherlands)
- 2021 REFLECTIONS: work from isolation 2020-2021 (Online)
- 2019 Art Next Expo, PMQ (Central, Hong Kong)
- 2015 Chelsea College of Arts Undergraduate Summer Show, Chelsea College of Art
(London, UK)
- 2014 LINKS Exhibition, 5th Base Gallery (London, UK)

